

REVISED IN ACCORDANCE WITH CONSTRUCTION RECORDS:

CONTRACTOR: Delta Excavating  
 INSPECTOR: Ken Thompson - Freshwater  
 DRAWN BY: dm  
 DATE: December, 2008 020881



- SYMBOL LEGEND**
- UTILITY POLE
  - FOUND IRON
  - GAS MARKER
  - GUY ANCHOR
  - TELEPHONE BOX
  - HYDRANT
  - DECIDUOUS TREE
  - EVERGREEN TREE
  - LIGHT POLE
  - BITUMINOUS
  - CONCRETE
  - 1800 GRADE SITES

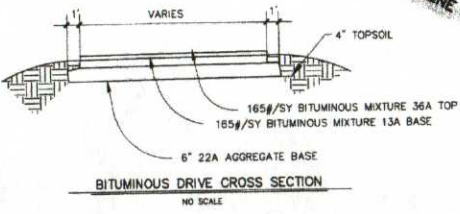
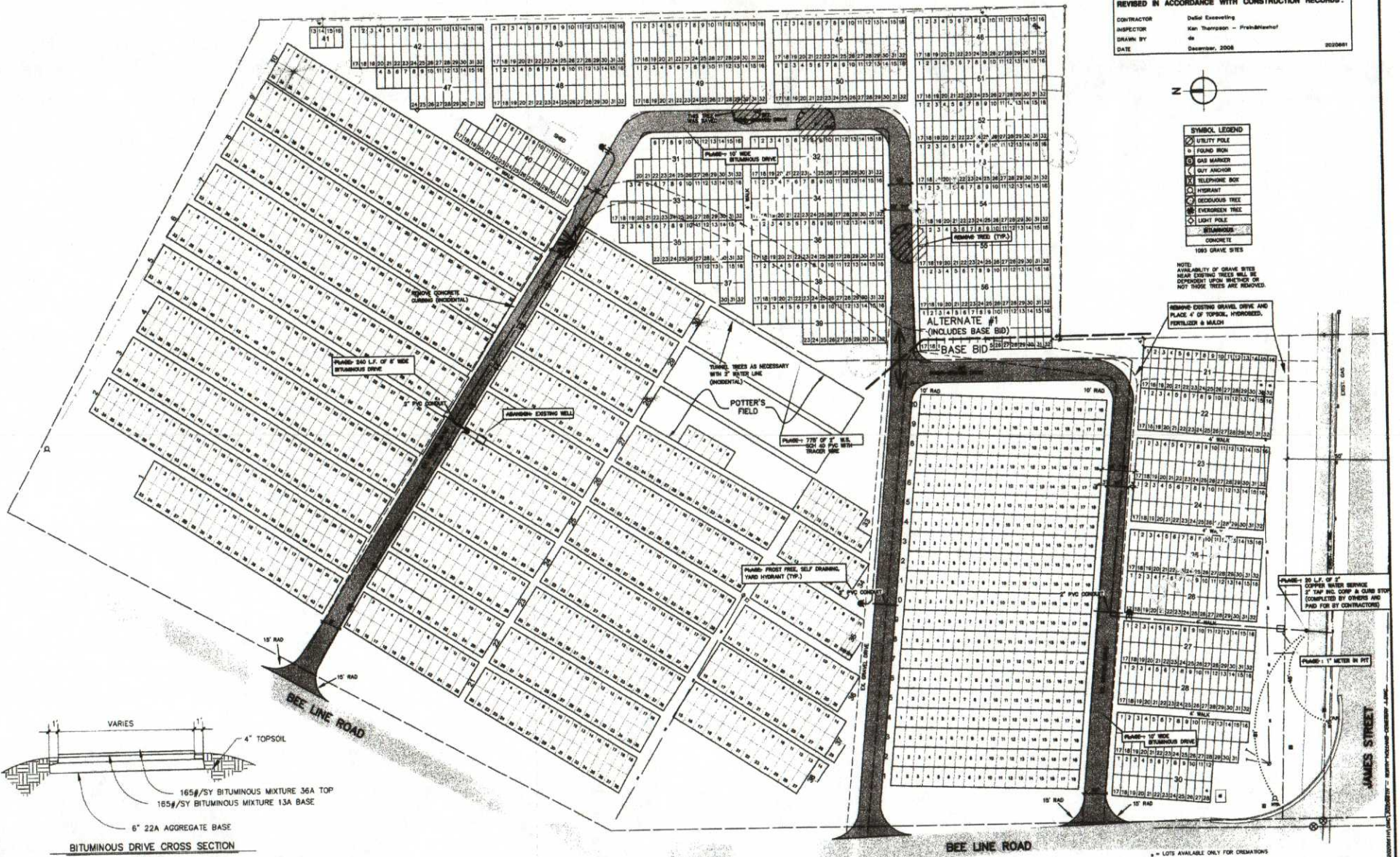
NOTE:  
 AVAILABILITY OF GRAVE SITES  
 NEAR EXISTING TREES WILL  
 DEPEND UPON METHOD OF  
 ROOT REMOVAL.

REMOVE EXISTING GRAVEL DRIVE AND  
 PLACE 4" OF TOPSOIL, HYDROSEED,  
 FERTILIZER & MULCH

PHASE - 30' L.F. OF 4" TOPSOIL SERVICE  
 IF TAP INC. CORP. & CURB STOP  
 COMPLETED BY OTHERS AND  
 PAID FOR BY CONTRACTORS

PHASE - 1' METER IN PVT

LOTS AVAILABLE ONLY FOR CREATIONS



- 1) EXISTING UTILITY LOCATIONS WERE OBTAINED FROM AVAILABLE RECORDS AND NOT VERIFIED BY FIELD SURVEY. ACTUAL LOCATIONS SHALL BE FIELD VERIFIED BY THE RESPECTIVE UTILITIES THROUGH THE "MIS DIG" SERVICE. CALL 800-550-0000 (800-482-7171) 72 HOURS BEFORE DIGGING.
- 2) LOCATIONS OF PROPERTY LINES SHOWN BY THIS DRAWING ARE APPROXIMATE.
- 3) HOUSE LEAD LOCATIONS ARE APPROXIMATE. ACTUAL LOCATIONS TO BE DETERMINED BY FIELD ENGINEER.
- 4) ALL WORK SHALL BE DONE IN ACCORDANCE WITH MDOT AND PREIN&NEWHOF STANDARD SPECIFICATIONS.



NO.	REVISIONS	BY	DATE	ISSUE
				PLS/DWS
			MAR '04	ISSUED
				DATE

**Prein & Newhof**  
 Engineers-Surveyors-Environmental & Soils Laboratory

HOLLAND CHARTER TOWNSHIP  
 LOCATED IN SECTION 17, T. 8 N., R. 15 W.  
 HOLLAND TOWNSHIP, OTTAWA COUNTY, MICHIGAN

**NORTH HOLLAND CEMETERY IMPROVEMENTS**

PROJECT NO.  
**2020861H**  
 SHEET NO.

1 of 1  
**H19-39**