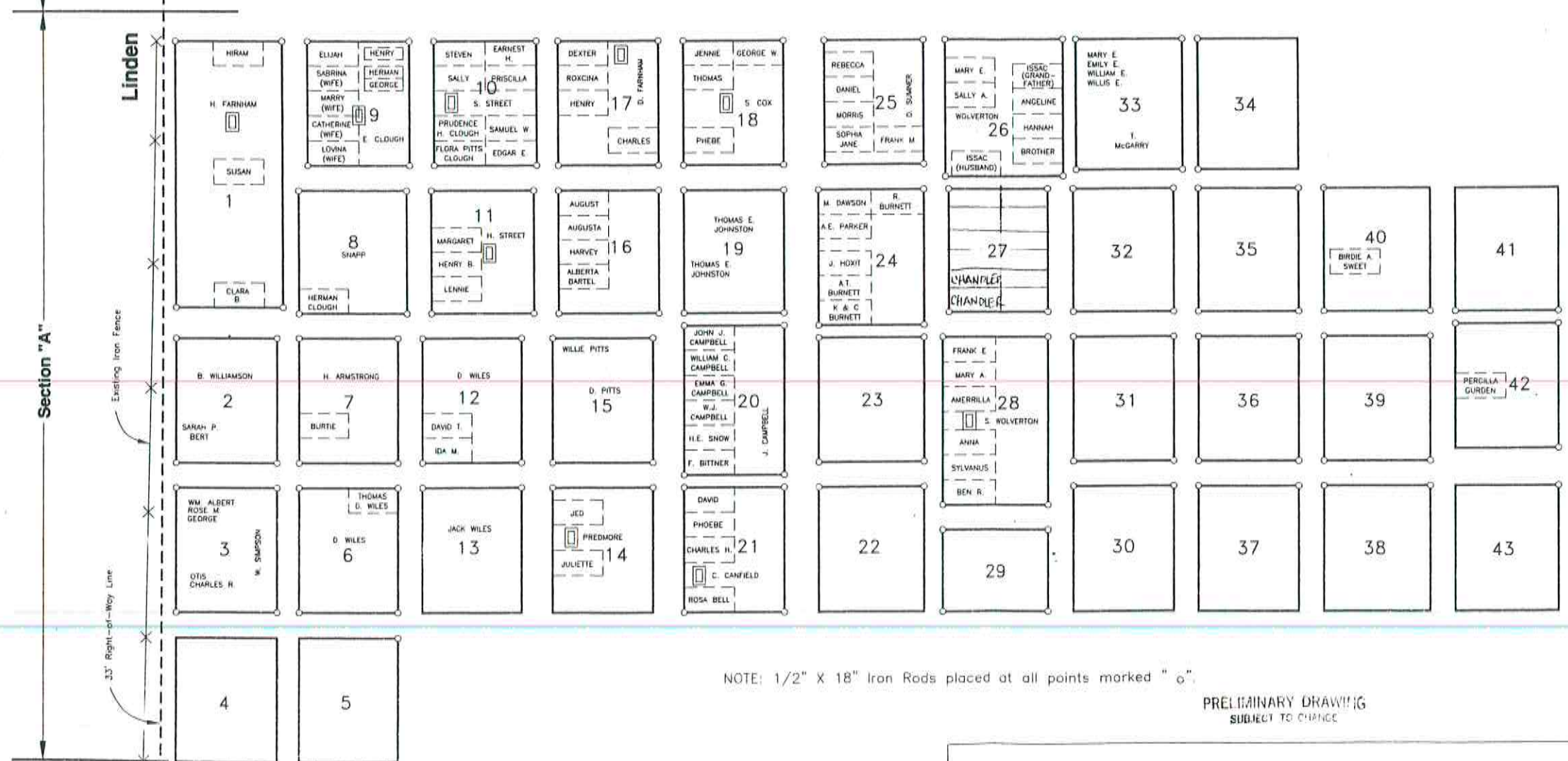
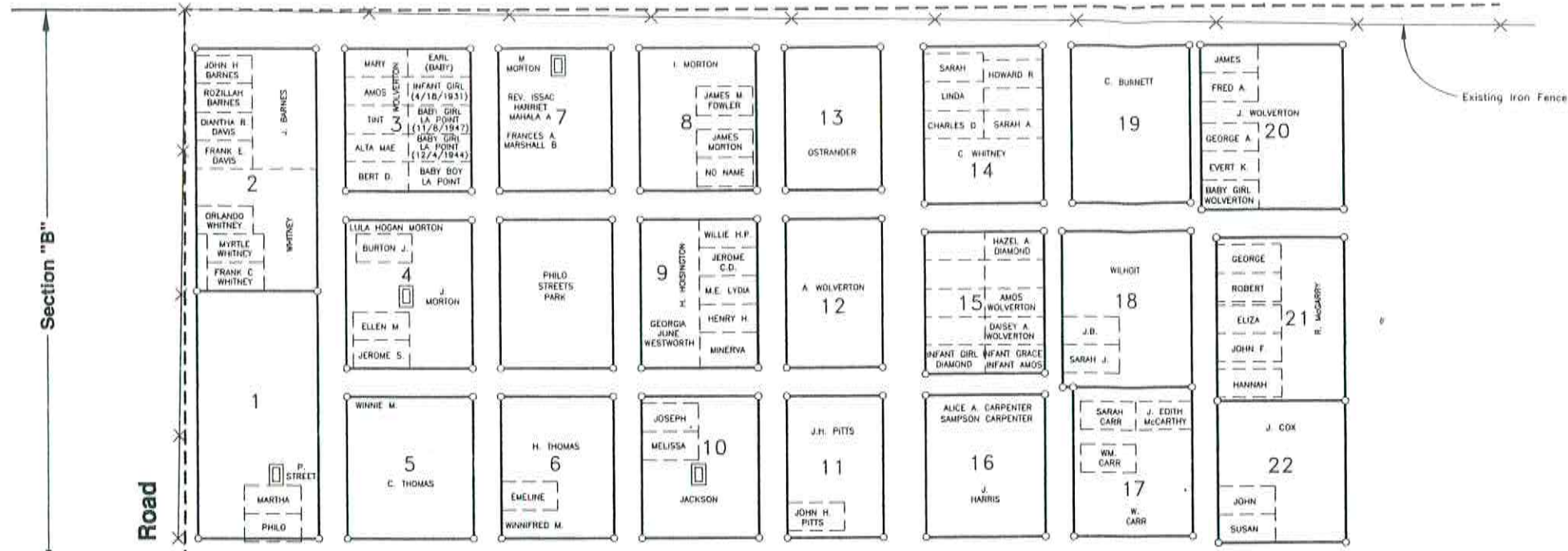


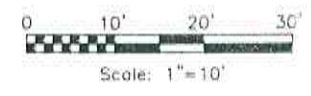
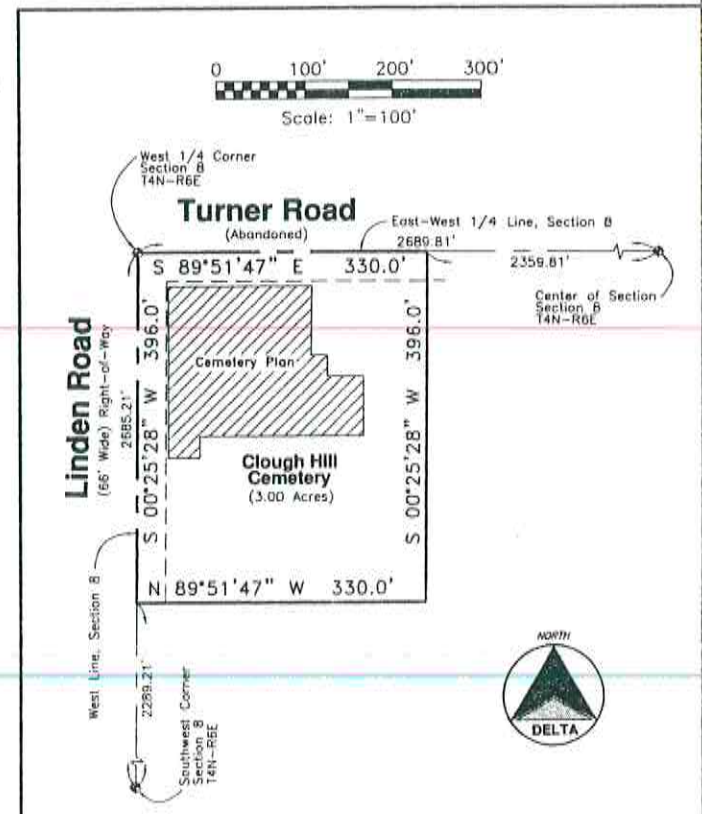
SUBJECT TO CHANGE



NOTE: 1/2" X 18" Iron Rods placed at all points marked "o".

PRELIMINARY DRAWING  
SUBJECT TO CHANGE

PRELIMINARY DRAWING  
SUBJECT TO CHANGE



# Clough Hill Cemetery

Section 8, Tyrone Township, Livingston County, Michigan

Revision	Dates
12-26-2000	

**DELTA LAND SURVEYING & ENGINEERING, INC.**

14214 Fenton Rd. Fenton, MI 48430  
 Phone (810) 629-6154 Fax (810) 629-5252  
 120 West First St. Flint, MI 48502  
 Phone (810) 239-1419 Fax (810) 239-2406

CLOUGH HILL CEMETERY  
 THIS IS TRANSCRIBED FROM A DRAWING DATED JANUARY 4, 1993