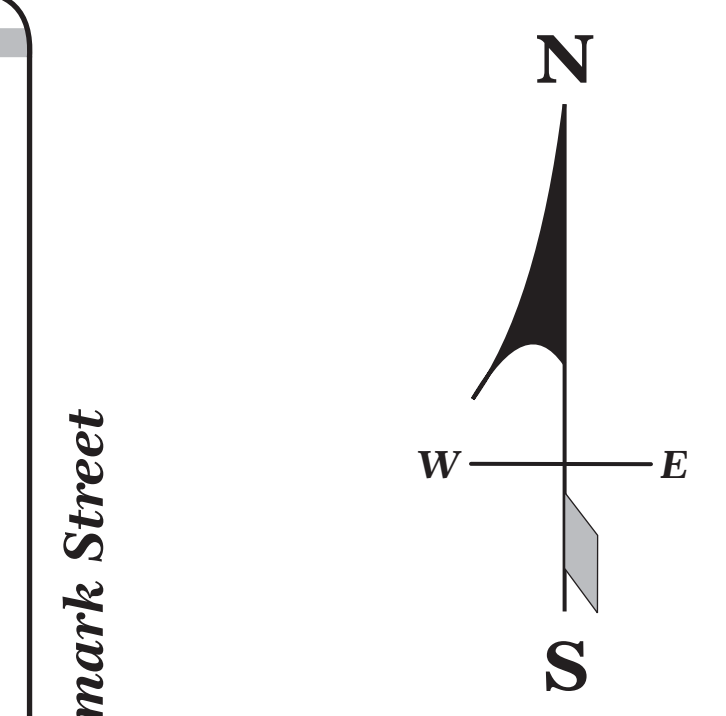
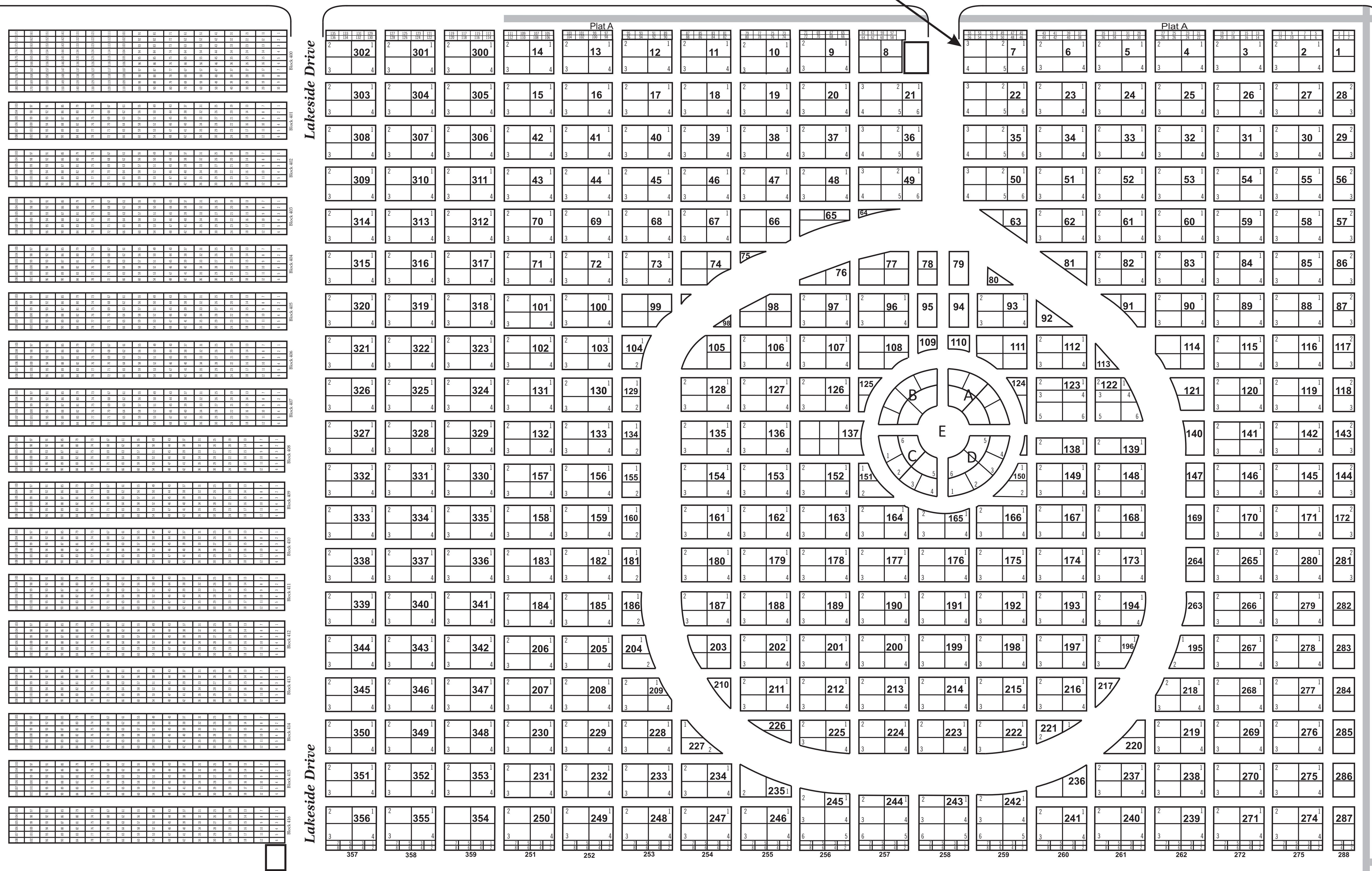


LAKESIDE CEMETERY
CITY OF MUSKEGON, MICHIGAN

map drawn by: William P. Hansen, 9-21-2015
revised 5-12-2016
for the Muskegon County Genealogical Society
genealogymuskegon.com

To locate a grave site on this map, obtain the burial site numbers at genealogymuskegon.com,
or from the City of Muskegon Cemetery department.
Example: Milheiser, Edith {3-7}, the first number is the Lot within the block. The second is the
Block {1 to 416 or Plat A}. This is the Lot/Block location for Edith Milheiser {3-7}.



City of Muskegon
Department of Public Works
1350 E. Keating
Muskegon, MI 49442
Ph 231-724-6783